

HDC HE 24 MT

Weidmüller Interfaces GmbH & Co. KG

Postfach 3030

32760 Detmold

Tel. +49 5231 14-0

Fax. +49 5231 14-2083

info@weidmueller.com

www.weidmueller.com



For the tension clamp connection, the wire connection level is designed as a tension clamp element. Thus practically no servicing is required. In addition, a secure and permanent connection is established which is resistant to vibrations.

Number of poles: **24**

Rated current: **16 A**

Rated voltage: **500 V**

Nominal voltage acc. to UL/CSA: **600 V AC/DC**

Tension clamp connection

General ordering data

| | |
|------------|---|
| Version | HDC insert, Male, 500 V, 16 A, Number of poles: 24, Tension-clamp connection, Size: 8 |
| Order No. | 1745850000 |
| Type | HDC HE 24 MT |
| GTIN (EAN) | 4008190985578 |
| Qty. | 1 pc(s). |

HDC HE 24 MT

Weidmüller Interfaces GmbH & Co. KG

Postfach 3030

32760 Detmold

Tel. +49 5231 14-0

Fax. +49 5231 14-2083

info@weidmueller.com

www.weidmueller.com

Technical data

Dimensions and weights

| | | | |
|------------|---------|-----------------|------------|
| Depth | 111 mm | Depth (inches) | 4.37 inch |
| Height | 33.5 mm | Height (inches) | 1.319 inch |
| Width | 34 mm | Width (inches) | 1.339 inch |
| Net weight | 100 g | | |

Temperatures

Limit temperature -40 °C ... 125 °C

Environmental Product Compliance

REACH SVHC Lead 7439-92-1, Potassium perfluorobutane sulfonate 29420-49-3
 SCIP b67daa31-7dca-434d-8290-da7fb52f83a2

| Chemical resistance | Substance | Chemical resistance |
|---------------------|---------------------------|-------------------------|
| | Acetone | Resistant |
| | Ammonia, watery | Conditionally resistant |
| | Petrol | Resistant |
| | Benzene | Resistant |
| | Diesel oil | Conditionally resistant |
| | Acetic acid, concentrated | Resistant |
| | Potassium hydroxide | Conditionally resistant |
| | Methanol | Conditionally resistant |
| | Motor oil | Conditionally resistant |
| | Lye, diluted | Resistant |
| | Hydrochlorofluorocarbons | Conditionally resistant |
| | Outdoor use | Conditionally resistant |

Dimensions

| | | | |
|----------------|---------|-------------------|--------|
| Height of plug | 33.5 mm | Total length base | 111 mm |
| Width | 34 mm | | |

HDC HE 24 MT

Weidmüller Interfaces GmbH & Co. KG

Postfach 3030

32760 Detmold

Tel. +49 5231 14-0

Fax. +49 5231 14-2083

info@weidmueller.com

Technical data

General data

| | | | |
|--------------------------------------|---|------------------------------|---------------------|
| BG | 8 | Conductor cross-section | 2.5 mm ² |
| Insulating material | PC glass-fibre reinforced (UL-listed and railway-certified) | Insulating material group | IIIa |
| Insulation strength | 10 ¹⁰ Ω | Material | Copper alloy |
| Number of poles | 24 | Plugging cycles, silver | ≥ 500 |
| Pollution severity | 3 | Rated current (DIN EN 61984) | 16 A |
| Rated impulse voltage (DIN EN 61984) | 6 kV | Rated voltage (DIN EN 61984) | 500 V |
| Rated voltage according to UL/CSA | 600 V AC/DC | Series | HE |
| Size | 8 | Surface finish | Silver passivated |
| Type | Male | UL 94 flammability rating | V-0 |
| Volume resistance | ≤2 mΩ | | |

Connection data PE

| | | | |
|---------------------------------------|--------------|---------------------------------------|-------------------|
| Blade size, slotted (PE connection) | SD 0.8 x 4.0 | Connection type PE | Screw connection |
| Fixing screw | M 4 | Rated cross-section | 4 mm ² |
| Stripping length PE connection | 10 mm | Tightening torque, max. PE connection | 1.5 Nm |
| Tightening torque, min. PE connection | 1.2 Nm | Wire cross section, AWG (PE), max. | AWG 12 |
| Wire cross section, AWG (PE), min. | AWG 20 | | |

Version

| | | | |
|---|--------------------------|---|----------------------|
| BG | 8 | Blade size, slotted (screw connection) | SD 0.5 x 3.0 |
| Conductor cross-section, max. | 2.5 mm ² | Conductor cross-section, min. | 0.25 mm ² |
| Material | Copper alloy | Size | 8 |
| Stripping length, rated connection | 8 mm | Surface finish | Silver passivated |
| Type of connection | Tension-clamp connection | Volume resistance | ≤2 mΩ |
| Wire connection cross section AWG, max. | AWG 14 | Wire connection cross section AWG, min. | AWG 24 |
| Wire connection cross section, finely stranded, max. | 2.5 mm ² | Wire connection cross section, finely stranded, min. | 0.5 mm ² |
| Wire connection cross-section, finely stranded with wire-end ferrules DIN 46228/4, max. | 2.5 mm ² | Wire connection cross-section, finely stranded with wire-end ferrules DIN 46228/4, min. | 0.5 mm ² |
| Wire cross-section, solid, max. | 2.5 mm ² | Wire cross-section, solid, min. | 0.5 mm ² |

Classifications

| | | | |
|-------------|-------------|-------------|-------------|
| ETIM 6.0 | EC000438 | ETIM 7.0 | EC000438 |
| ETIM 8.0 | EC000438 | ECLASS 9.0 | 27-44-02-05 |
| ECLASS 9.1 | 27-44-02-05 | ECLASS 10.0 | 27-44-02-05 |
| ECLASS 11.0 | 27-44-02-05 | ECLASS 12.0 | 27-44-02-05 |

Approvals

Approvals



| | |
|-------------------------|---------|
| ROHS | Conform |
| Certificate No. (cURus) | E92202 |

Creation date October 3, 2022 6:43:27 PM CEST

Catalogue status 23.09.2022 / We reserve the right to make technical changes.

HDC HE 24 MT**Weidmüller Interfaces GmbH & Co. KG**

Postfach 3030

32760 Detmold

Tel. +49 5231 14-0

Fax. +49 5231 14-2083

info@weidmueller.comwww.weidmueller.com**Technical data****Downloads**Approval/Certificate/Document of
Conformity[Manufacturer's declaration](#)

Engineering Data

[CAD data - 1745850000 HDC HE 24 MT STP Blatt_1.dxf](#)
[CAD data - STEP](#)

Engineering Data

[EPLAN, WSCAD, Zuken E3.S](#)

Technical Documentation

[1745850000 HDC HE 24 MT STP Blatt_1.pdf](#)

Catalogues

[Catalogues in PDF-format](#)

Brochures

[FL FIELDWIRING EN](#)
[FL FIELDWIRING EN](#)

HDC HE 24 MT

Weidmüller Interfaces GmbH & Co. KG

Postfach 3030

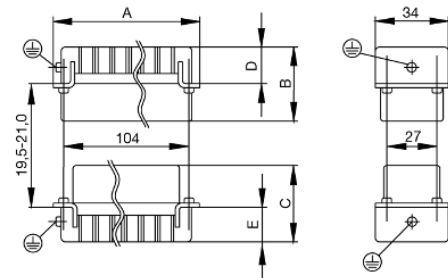
32760 Detmold

Tel. +49 5231 14-0

Fax. +49 5231 14-2083

info@weidmueller.com

Drawings



Tightening torques and screwing tools

| Screw size | Connector type | Dia. tightening torque in Nm | Recommended blade inserts and AF size for hexagon socket | |
|---------------------------------------|---|---|--|-----------------------------------|
| M 2.5 | Signal contacts | | | |
| | S 6/6 | 0.5 - 0.55 | SD 0.6 x 3.5 mm or PZ0 | |
| | S 6/12 | 0.5 - 0.55 | SD 0.6 x 3.5 mm or PZ0 | |
| M 2.9 x 0.5 | Fastening screws | | | |
| | HQ 4/2 | 0.8 (plastic) / 1.1 (metal) | SD 0.6 x 3.5 mm or PH0 | |
| | HQ 8 | 0.8 (plastic) / 1.1 (metal) | SD 0.6 x 3.5 mm or PH0 | |
| | HQ 17 | 0.8 (plastic) / 1.1 (metal) | SD 0.6 x 3.5 mm or PH0 | |
| M 3 | Contact screws | | | |
| | HA 3 | 0.5 - 0.55 | SD 0.5 x 3.0 mm | |
| | HA 4 | 0.5 - 0.55 | SD 0.5 x 3.0 mm | |
| | HA 10 bis HA 48 | 0.5 - 0.55 | SD 0.6 x 3.5 mm or PH0 | |
| | HE | 0.5 - 0.55 | SD 0.6 x 3.5 mm or PZ0 | |
| | HVE | 0.5 - 0.55 | SD 0.6 x 3.5 mm or PZ0 | |
| | Signal contacts: | | | |
| | S 4/2 | 0.5 - 0.55 | SD 0.6 x 3.5 mm or PZ0 | |
| | S 4/8 | 0.5 - 0.55 | SD 0.6 x 3.5 mm or PZ0 | |
| | PE connection via female contact | | | |
| | S 4 | 0.5 - 0.8 | SD 0.6 x 3.5 mm | |
| | ConCept modular frame, metal | 0.5 - 0.55 | SD 0.6 x 3.5 mm | |
| | PE terminal | | | |
| | HQ 5 | 0.5 - 0.55 | SD 0.6 x 3.5 or 0.8 x 4 mm | |
| | HQ 7 | 0.5 - 0.55 | SD 0.6 x 3.5 or 0.8 x 4 mm | |
| | Fastening screws | 0.5 - 0.55 | SD 0.6 x 3.5 mm or PZ0 | |
| | Guide pin | 0.5 - 0.55 | SD 0.6 x 3.5 mm or PZ0 | |
| | Guide bush | 0.5 - 0.55 | SD 0.6 x 3.5 mm or PZ0 | |
| | Coding pins | 0.5 - 0.55 | SD 0.6 x 3.5 mm or PZ0 | |
| | M 4 | Contact screws | | |
| | | HSB | 1.2 - 1.5 | SD 0.6 x 3.5 or 0.8 x 4 mm or PZ1 |
| PE connection via male contact | | | | |
| S 4 | | 0.5 - 0.8 | SD 0.6 x 3.5 mm | |
| ConCept modular frame, metal | | 1.2 - 1.5 | SD 0.6 x 3.5 mm | |
| PE terminal | | | | |
| HA | | 1.2 - 1.5 | SD 0.6 x 3.5 or 0.8 x 4 mm or PH1 | |
| HE | | 1.2 - 1.5 | SD 0.6 x 3.5 or 0.8 x 4 mm or PH1 | |
| HEE | | 1.2 - 1.5 | SD 0.6 x 3.5 or 0.8 x 4 mm or PH1 | |
| HVE | | 1.2 - 1.5 | SD 0.6 x 3.5 or 0.8 x 4 mm or PH1 | |
| HD | | 1.2 - 1.5 | SD 0.6 x 3.5 or 0.8 x 4 mm or PZ1 | |
| HDD | | 1.2 - 1.5 | SD 0.6 x 3.5 or 0.8 x 4 mm or PZ1 | |
| S 6/6 (for signal contacts) | | 1.2 - 1.5 | 0.8 x 4 mm or PZ1 | |
| ConCept modular frame, plastic | | 1.2 - 1.5 | 0.8 x 4 mm or PZ1 | |
| M 5 | | PE terminal | | |
| | HSB | 2 - 2.5 | SD 1 x 5.5 mm or PZ2 | |
| | S 4/0 (Screw connection) | 2 - 2.5 | SD 1.2 x 6.5 mm or PH2 | |
| | S 4/0 (Axial screw connection) | 2 - 2.5 | SD 0.8 x 4 mm or PZ 2 | |
| | S 4/2 | 2 - 2.5 | SD 1.2 x 6.5 mm or PH2 | |
| | S 4/8 | 2 - 2.5 | SD 1.2 x 6.5 mm or PH2 | |
| | S 6/12 | 2 - 2.5 | SD 0.8 x 4 mm or PZ 2 | |
| | S 6/36 | 2 - 2.5 | SD 1.2 x 6.5 mm or PH2 | |
| | S 8/24 | 2 - 2.5 | SD 1.2 x 6.5 mm or PH2 | |
| | S 12/2 | 2 - 2.5 | SD 1.2 x 6.5 mm or PH2 | |
| | M 6 | Power contacts | | |
| S 4/0 (Screw connection) | | 1.2 (1.5 mm ²) / 2 (2.5 mm ²) / 3 (4-16 mm ²) | SD 0.8 x 4 mm | |
| S 4/2 | | 1.2 (1.5 mm ²) / 2 (2.5 mm ²) / 3 (4-16 mm ²) | SD 0.8 x 4 mm | |
| S 4/8 | | 1.2 (1.5 mm ²) / 2 (2.5 mm ²) / 3 (4-16 mm ²) | SD 0.8 x 4 mm | |
| M 7 x 0.75 | Power contacts | | | |
| | S 4 | 1.1 - 1.7 | SW 2 | |
| | S 6/6 (+ PE) | 6 - 8 | SW 4 | |
| M 8 x 0.75 | Power contacts | | | |
| | S 6/12 | 1.1 - 1.7 | SW 2 | |
| | S 8/0 (+ PE) | 6 (10-16 mm ²) - 7 (25 mm ²) | SW 4 | |
| M10 x 1 | Power contacts | | | |
| | S 4/0 (Axial connection) | 2 - 3 | SW 3 | |

Increasing the tightening torque does not improve the contact resistance. The stated torque settings offer optimal mechanical, thermal and electrical conditions. Exceeding the recommended values may even damage the conductor and terminal.