

## TRS 120VAC RC 1CO AU

**Weidmüller Interface GmbH & Co. KG**

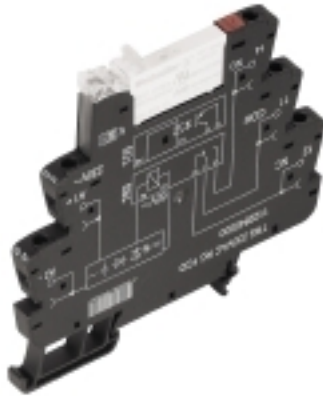
Klingenbergstraße 26

D-32758 Detmold

Germany

[www.weidmueller.com](http://www.weidmueller.com)

### Product image



Similar to illustration

- 1 CO contact
- Contact material: AgNi 5µm Au
- Unique multi-voltage input from 24 to 230 V UC
- Input voltages from 5 V DC to 230 V UC with coloured marking: AC: red, DC: blue, UC: white

### General ordering data

|            |   |
|------------|---|
| Version    | TERMSERIES, Relay module, Number of contacts: 1, CO contact AgNi gold-plated, Rated control voltage: 120 V AC $\pm 10\%$ , Continuous current: 6 A, Screw connection, Test button available: No |
| Order No.  | <a href="#">1123070000</a>  |
| Type       | TRS 120VAC RC 1CO AU  |
| GTIN (EAN) | 4032248904952   |
| Qty.       | 10 pc(s).   |

Creation date October 3, 2022 6:40:45 PM CEST

Catalogue status 23.09.2022 / We reserve the right to make technical changes.

**TRS 120VAC RC 1CO AU**
**Weidmüller Interface GmbH & Co. KG**

Klingenbergstraße 26

D-32758 Detmold

Germany

www.weidmueller.com

**Technical data**
**Dimensions and weights**

|            |         |                 |            |
|------------|---------|-----------------|------------|
| Depth      | 87.8 mm | Depth (inches)  | 3.457 inch |
| Height     | 89.6 mm | Height (inches) | 3.528 inch |
| Width      | 6.4 mm  | Width (inches)  | 0.252 inch |
| Net weight | 34 g    |                 |            |

**Temperatures**

|                     |  |                       |                |
|---------------------|--|-----------------------|----------------|
| Storage temperature | -40 °C...85 °C   | Operating temperature | -40 °C...60 °C |
| Humidity            | 5-95% relative humidity,<br>T <sub>u</sub> = 40°C, without<br>condensation |                       |                |

**Environmental Product Compliance**

|            |                |      |                                      |
|------------|----------------|------|--------------------------------------|
| REACH SVHC | Lead 7439-92-1 | SCIP | 9e2cbc49-76d9-4611-b8ec-5b4f549a0aa9 |
|------------|----------------|------|--------------------------------------|

**Rated data UL**

|   |        |                                    |  |
|---|--------|------------------------------------|--|
| Ambient temperature (operational), max. | 60 °C  | Connection cross-section AWG, min. | AWG 26   |
| Connection cross-section AWG, max.      | AWG 14 | Type of conductor                  | rigid copper conductor,<br>flexible copper conductor |
| Tightening torque, max.                 | 0.4 Nm | Pollution severity level           | 2  |

**Control side**

|   |                       |                                       |                |
|---|-----------------------|---------------------------------------|----------------|
| Rated control voltage   | 120 V AC ± 10 %       | Rated current AC                      | 7 mA           |
| Power rating  | 840 mVA               | Pull-in/drop-out voltage, typ.        | 88 V / 43 V AC |
| Pull-in/drop-out current, typ.  | 4.8 mA / 2 mA AC      | Status indicator                      | Green LED      |
| Protective circuit  | Rectifier, RC element | RC filter                             | 94 Ω / 100 nF  |
| Coil voltage of the replacement relay<br>deviating from the rated control voltage | Yes                   | Coil voltage of the replacement relay | 60 V DC        |

**Load side**

|   |                                      |   |                                 |
|---|--------------------------------------|---|---------------------------------|
| Rated switching voltage                 | 250 V AC                             | Continuous current                      | 6 A                             |
| Max. switching frequency at rated load  | 0.1 Hz                               | Max. switching voltage, DC              | 250 V                           |
| Inrush current                          | 20 A / 20 ms                         | AC switching capacity (resistive), max. | 1500 VA                         |
| DC switching capacity (resistive), max. | 144 W @ 24 V                         | Switch-on delay                         | ≤ 15 ms                         |
| Switch-off delay                        | < 50 ms                              | Contact type                            | 1 CO contact (AgNi gold-plated) |
| Mechanical service life                 | 5 x 10 <sup>6</sup> switching cycles | Min. switching power                    | 1 mA @ 1 V                      |

**General data**

|                                      |                           |                |  |
|--------------------------------------|---------------------------|----------------|--|
| Operating altitude                   | ≤ 2000 m, above sea level |                |  |
| Rail                                 | TS 35                     |                |  |
| Test button available                | No                        |                |  |
| Mechanical switch position indicator | No                        |                |  |
| Colour                               | black                     |                |  |
| UL94 flammability rating component   | Component                 | Housing        |  |
|                                      | UL94 flammability rating  | V-0            |  |
|                                      | Component                 | Retaining clip |  |
|                                      | UL94 flammability rating  | V-0            |  |

Creation date October 3, 2022 6:40:45 PM CEST

Catalogue status 23.09.2022 / We reserve the right to make technical changes.

2

## TRS 120VAC RC 1CO AU

Weidmüller Interface GmbH &amp; Co. KG

Klingenbergstraße 26

D-32758 Detmold

Germany

www.weidmueller.com

## Technical data

## Insulation coordination

|  |                              |   |                              |
|--|------------------------------|---|------------------------------|
| Rated voltage                                    | 300 V                        | Pollution severity  | 2                            |
| Surge voltage category                           | III                          | Clearance and creepage distances for control side - load side | ≥ 6 mm                       |
| Dielectric strength for control side - load side | 4 kV <sub>eff</sub> / 1 Min. | Type of isolation at input and output                         | reinforced insulation        |
| Dielectric strength of open contact              | 1 kV <sub>eff</sub> / 1 min  | Dielectric strength to mounting rail                          | 4 kV <sub>eff</sub> / 1 Min. |
| Impulse withstand voltage                        | 6 kV (1.2/50 μs)             | Protection degree   | IP20                         |

## Further details of approvals / standards

|                         |             |                         |            |
|-------------------------|-------------|-------------------------|------------|
| Standards               | IEC 61810-1 | Certificate No. (DNVGL) | TAA00001E5 |
| Certificate no. (cULus) | E141197     |                         |            |

## Connection data

|   |                      |   |                     |
|---|----------------------|---|---------------------|
| Wire connection method  | Screw connection     | Stripping length, rated connection  | 8 mm                |
| Tightening torque, max.   | 0.4 Nm               | Clamping range, rated connection  | 1.5 mm <sup>2</sup> |
| Clamping range, min.  | 0.14 mm <sup>2</sup> | Clamping range, max.  | 2.5 mm <sup>2</sup> |
| Wire connection cross section AWG, min.   | AWG 26               | Wire connection cross section AWG, max.   | AWG 14              |
| Wire cross-section, solid, min.   | 0.14 mm <sup>2</sup> | Wire cross-section, solid, max.   | 2.5 mm <sup>2</sup> |
| Wire cross-section, solid, min. (AWG)   | AWG 26               | Wire cross-section, solid, max. (AWG)   | AWG 14              |
| Wire connection cross section, finely stranded, min.                                    | 0.14 mm <sup>2</sup> | Wire connection cross section, finely stranded, max.                                    | 2.5 mm <sup>2</sup> |
| Wire cross-section, finely stranded, min. (AWG)   | AWG 26               | Wire cross-section, finely stranded, max. (AWG)   | AWG 16              |
| Wire connection cross-section, finely stranded with wire-end ferrules DIN 46228/4, min. | 0.25 mm <sup>2</sup> | Wire connection cross-section, finely stranded with wire-end ferrules DIN 46228/4, max. | 2.5 mm <sup>2</sup> |
| Conductor cross-section, flexible, AEH (DIN 46228-1), min.                              | 0.25 mm <sup>2</sup> | Conductor cross-section, flexible, AEH (DIN 46228-1), max.                              | 1.5 mm <sup>2</sup> |
| Wire connection cross section, finely stranded, two clampable wires, min.               | 0.5 mm <sup>2</sup>  | Wire cross-section, finely stranded, two clampable wires, max.                          | 1 mm <sup>2</sup>   |
| Twin wire-end ferrules, min.  | 0.5 mm <sup>2</sup>  | Twin wire-end ferrules, max.  | 1 mm <sup>2</sup>   |
| Blade size  | size PHO             | Gauge to IEC 60947-1  | A1, B1              |

## Classifications

|             |             |             |             |
|-------------|-------------|-------------|-------------|
| ETIM 6.0    | EC001437    | ETIM 7.0    | EC001437    |
| ETIM 8.0    | EC001437    | ECLASS 9.0  | 27-37-16-01 |
| ECLASS 9.1  | 27-37-16-01 | ECLASS 10.0 | 27-37-16-01 |
| ECLASS 11.0 | 27-37-16-01 | ECLASS 12.0 | 27-37-16-01 |

## Approvals

Approvals



|                         |            |
|-------------------------|------------|
| ROHS                    | Conform    |
| UL File Number Search   | UL Website |
| Certificate no. (cULus) | E141197    |

**TRS 120VAC RC 1CO AU**

**Weidmüller Interface GmbH & Co. KG**  
Klingenbergstraße 26  
D-32758 Detmold  
Germany

[www.weidmueller.com](http://www.weidmueller.com)

**Technical data****Downloads**

|   |   |
|---|---|
| Approval/Certificate/Document of Conformity | <a href="#">EU Konformitätserklärung / EU Declaration of Conformity</a> |
| Engineering Data                            | <a href="#">CAD data – STEP</a>   |
| Engineering Data                            | <a href="#">EPLAN, WSCAD, Zuken E3.S</a>                                |
| User Documentation                          | <a href="#">Beipackzettel / Package Insert – multilingual</a>           |
| Catalogues                                  | <a href="#">Catalogues in PDF-format</a>                                |
| Brochures                                   |   |

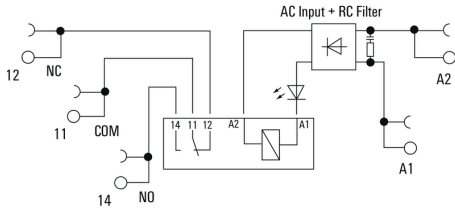
**TRS 120VAC RC 1CO AU**

**Weidmüller Interface GmbH & Co. KG**  
 Klingenbergstraße 26  
 D-32758 Detmold  
 Germany

www.weidmueller.com

**Drawings**

**Wiring diagram**

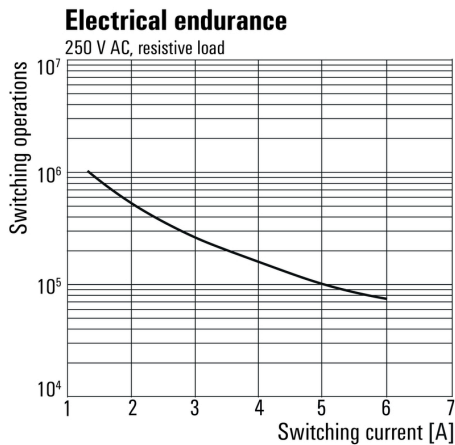


**Graph**



DC load limit curve

**Graph**



Electrical service life 230 V AC resistive load  
230 V AC resistive load

**Dimensional drawing**

