

**BALDOR® • RELIANCE** 

**Product Information Packet**

**FDL3510M**

**1HP,1725RPM,1PH,60HZ,56H,3524L,TEFC,F1,N**

Part Detail							
Revision:	H	Status:	PRD/A	Change #:		Proprietary:	No
Type:	AC	Elec. Spec:	35WGS245	CD Diagram:	CD0269	Mfg Plant:	
Mech. Spec:	35E2559	Layout:	35LYE2559	Poles:	04	Created Date:	03-26-2014
Base:	RG	Eff. Date:	06-01-2021	Leads:	4#16 A&J,2#18 B PH,1#14 #4TH		

Specs			
Catalog Number:	FDL3510M	Insulation Class:	F
Enclosure:	TEFC	Inverter Code:	Not Inverter
Frame:	56H	KVA Code:	K
Frame Material:	Steel	Lifting Lugs:	No Lifting Lugs
Motor Letter Type:	Cap Start, Induction Run	Locked Bearing Indicator:	No Locked Bearing
Output @ Frequency:	1.000 HP @ 60 HZ	Motor Lead Quantity/Wire Size:	4 @ 16 AWG, A&J
Synchronous Speed @ Frequency:	1800 RPM @ 60 HZ	Motor Lead Exit:	Ko Box
Voltage @ Frequency:	115.0 V @ 60 HZ	Motor Lead Termination:	Flying Leads
	230.0 V @ 60 HZ	Motor Type:	3524L
XP Class and Group:	None	Mounting Arrangement:	F1
XP Division:	Not Applicable	Power Factor:	73
Agency Approvals:	UR	Product Family:	General Purpose
	CSA	Product Type:	FARM DUTY
Auxillary Box:	No Auxillary Box	Pulley End Bearing Type:	Sealed Bearing
Auxillary Box Lead Termination:	None	Pulley Face Code:	Standard
Base Indicator:	Rigid	Pulley Shaft Indicator:	Standard
Bearing Grease Type:	Polyrex EM (-20F +300F)	Rodent Screen:	None
Blower:	None	Shaft Extension Location:	Pulley End

<b>Current @ Voltage:</b>	13.000 A @ 115.0 V	<b>Shaft Ground Indicator:</b>	No Shaft Grounding
	6.500 A @ 230.0 V	<b>Shaft Rotation:</b>	Reversible
	6.800 A @ 208.0 V	<b>Shaft Slinger Indicator:</b>	Shaft Slinger
<b>Design Code:</b>	L	<b>Speed Code:</b>	Single Speed
<b>Drip Cover:</b>	No Drip Cover	<b>Motor Standards:</b>	NEMA
<b>Duty Rating:</b>	CONT	<b>Starting Method:</b>	Direct on line
<b>Electrically Isolated Bearing:</b>	Not Electrically Isolated	<b>Thermal Device - Bearing:</b>	None
<b>Feedback Device:</b>	NO FEEDBACK	<b>Thermal Device - Winding:</b>	None
<b>Front Face Code:</b>	Standard	<b>Vibration Sensor Indicator:</b>	No Vibration Sensor
<b>Front Shaft Indicator:</b>	None	<b>Winding Thermal 1:</b>	Manual Thermal Overload
<b>Heater Indicator:</b>	No Heater	<b>Winding Thermal 1 Location:</b>	KO
		<b>Winding Thermal 2:</b>	None

<b>Nameplate NP1280L</b>										
<b>CAT.NO.</b>	FDL3510M									
<b>SPEC.</b>	35E2559S245G1									
<b>HP</b>	1									
<b>VOLTS</b>	115/230									
<b>AMP</b>	13/6.5									
<b>RPM</b>	1725									
<b>FRAME</b>	56H			<b>HZ</b>	60		<b>PH</b>	1		
<b>SER.F.</b>	1.15		<b>CODE</b>	K		<b>DES</b>	L		<b>CL</b>	F
<b>NEMA-NOM-EFF</b>	67		<b>PF</b>	73						
<b>RATING</b>	40C AMB-CONT									
<b>CC</b>							<b>USABLE AT 208V</b>	6.8		
<b>DE</b>	6205			<b>ODE</b>	6203					
<b>ENCL</b>	TEFC		<b>SN</b>							

**AC Induction Motor Performance Data**

Record # 61934

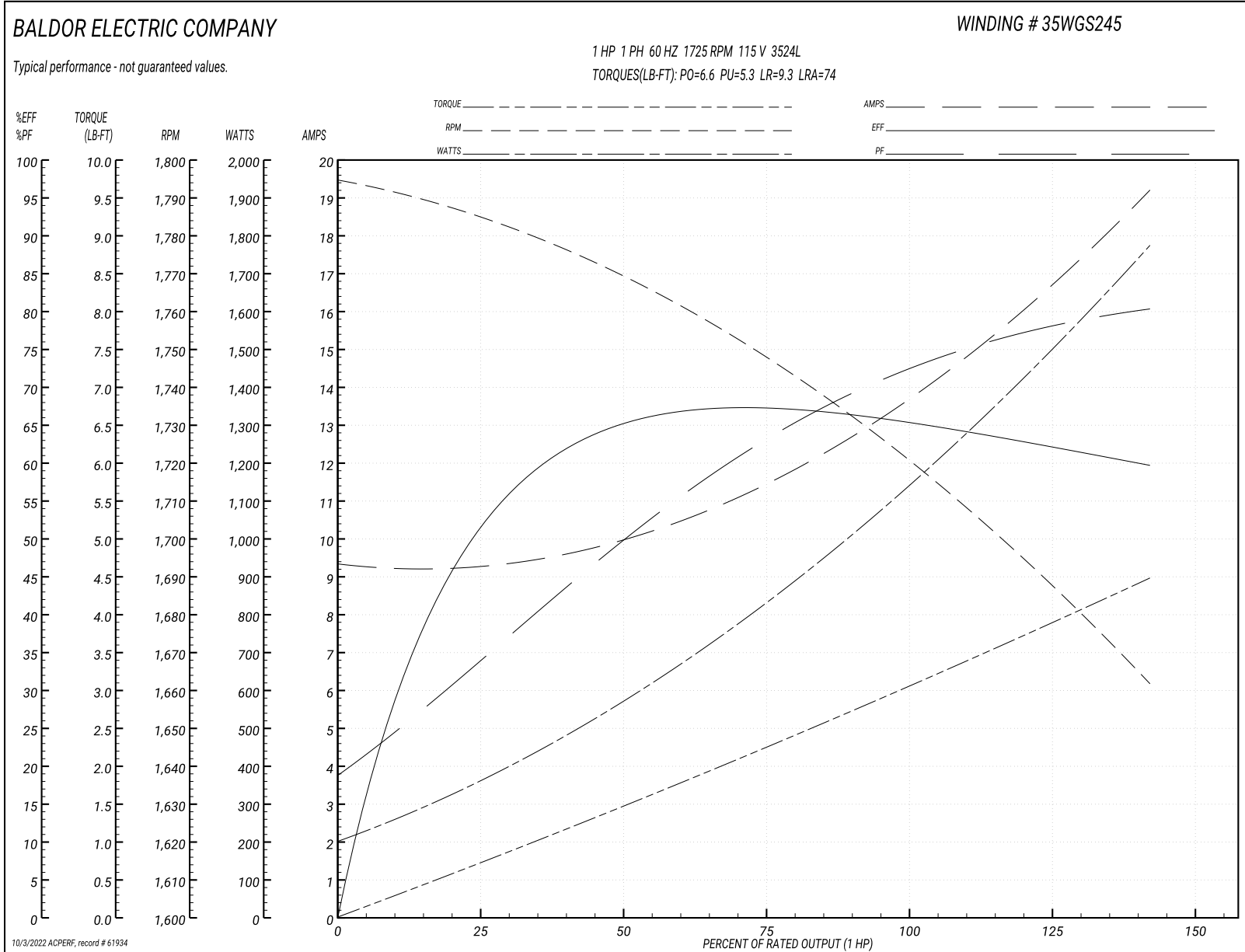
Typical performance - not guaranteed values

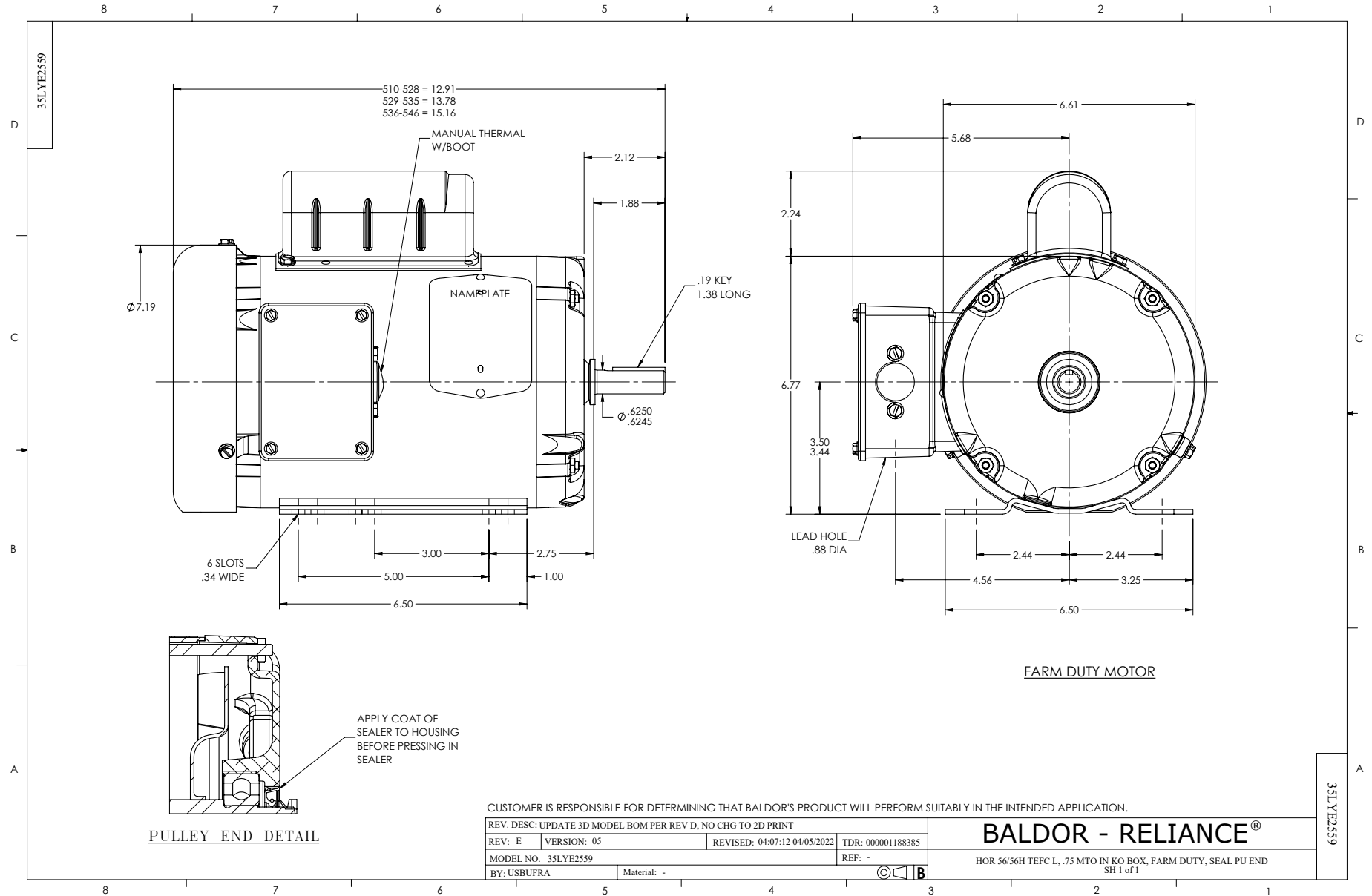
Winding: 35WGS245-R004			Type: 3524L		Enclosure: TEFC	
<b>Nameplate Data</b>				<b>115 V, 60 Hz: Low Voltage Connection</b>		
Rated Output (HP)		1	Full Load Torque	3 LB-FT		
Volts		115/230	Start Configuration	direct on line		
Full Load Amps		13/6.5	Breakdown Torque	6.6 LB-FT		
R.P.M.		1725	Pull-up Torque	5.3 LB-FT		
Hz	60 Phase	1	Locked-rotor Torque	9.3 LB-FT		
NEMA Design Code	L KVA Code	K	Starting Current	74 A		
Service Factor (S.F.)		1.15	No-load Current	9.2 A		
NEMA Nom. Eff.	67 Power Factor	73	Line-line Res. @ 25°C	0.693 Ω A Ph 1.77 Ω B Ph		
Rating - Duty		40C AMB-CONT	Temp. Rise @ Rated Load	75°C		
S.F. Amps			Temp. Rise @ S.F. Load	87°C		
			Locked-rotor Power Factor	92.3		
			Rotor inertia	0.142 LB-FT <sup>2</sup>		

**Load Characteristics 115 V, 60 Hz, 1 HP**

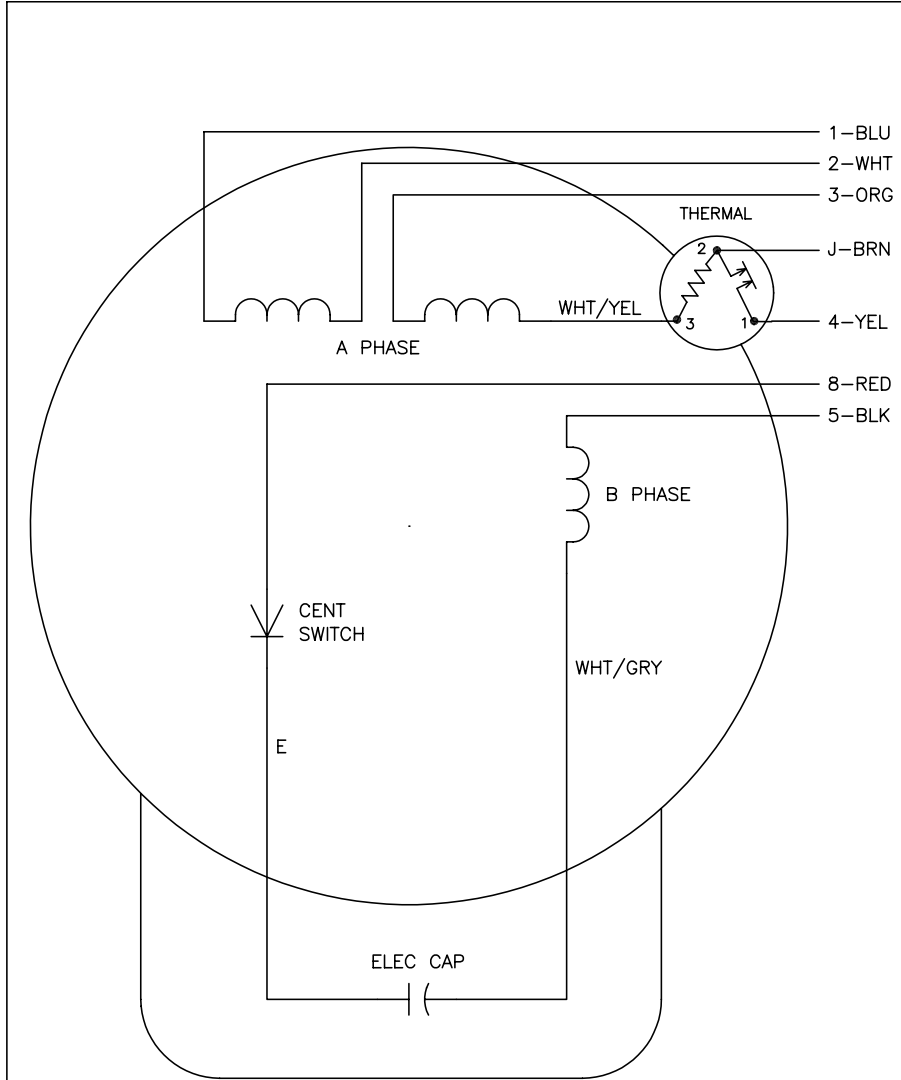
% of Rated Load	25	50	75	100	125	150	S.F.
Power Factor	34	51	64	72	77	81	75
Efficiency	51.1	63	66.8	66.6	63.9	58.9	65
Speed	1781	1766	1749	1725	1697	1658	1708
Line amperes	9.4	10.2	11.4	13.4	16	19.4	15

Performance Graph at 115V, 60Hz, 1.0HP Typical performance - Not guaranteed values





CD0269



	LINE A	LINE B	JOIN	JOIN
HIGH STD	1,8	4	2,3,5	J
HIGH OPP	1,5	4	2,3,8	J
LOW STD	1,3,8	4	-	2,J,5
LOW OPP	1,3,5	4	-	2,J,8

- NOTES:
1. STANDARD ROTATION IS CCW FACING END OPPOSITE SHAFT EXTENSION.
  2. MULTIPLE CAPACITORS ARE CONNECTED IN PARALLEL UNLESS OTHERWISE SPECIFIED.
  3. LEAD COLORS ARE OPTIONAL. LEADS MUST ALWAYS BE NUMBERED AS SHOWN.

REV. DESC: REVISE TO SHOW OPTIONAL COLORS			
REV. LTR: E	BY: JLP	REVISED: 04/08/99 1:07	TDR: 0178636
692000		FILE: AAA00007421	MDL: -
		MTL: -	

**BALDOR ELECTRIC Co.**

TYPE L, DV, REV, THERMAL, B PH AMPS THRU HTR HVC, 7 LEAD

CD0269