

ACT20P-VM-AO-S**Weidmüller Interface GmbH & Co. KG**

Klingenbergstraße 26

D-32758 Detmold

Germany

www.weidmueller.com

Product image**ACT20P: The flexible solution**

- Precise and highly functional signal converters
- Release levers simplify handling

General ordering data

Version	Signal converter/insulator, Input: AC/DC voltage, Output: 4 - 20 mA, AC/DC voltage, 0-10 V, 0(4)-20 mA
Order No.	7760054306
Type	ACT20P-VM-AO-S
GTIN (EAN)	6944 169749087
Qty.	1 pc(s).

Creation date October 3, 2022 6:24:43 PM CEST

Catalogue status 23.09.2022 / We reserve the right to make technical changes.

ACT20P-VM-AO-S

Weidmüller Interface GmbH & Co. KG

Klingenbergstraße 26

D-32758 Detmold

Germany

www.weidmueller.com

Technical data

Dimensions and weights

Depth	114.3 mm	Depth (inches)	4.5 inch
Height	119.2 mm	Height (inches)	4.693 inch
Width	22.5 mm	Width (inches)	0.886 inch
Net weight	110 g		

Temperatures

Storage temperature	-40 °C...85 °C	Operating temperature	-25 °C...65 °C
Humidity	5...95 %, no condensation		

Probability of failure

SIL in compliance with IEC 61508	None	MTTF	140 Years
----------------------------------	------	------	-----------

Environmental Product Compliance

REACH SVHC	Lead 7439-92-1	SCIP	2f6dd957-421a-46db-a0c2-cf1609156924
------------	----------------	------	--------------------------------------

Input

Input resistance	1 MΩ±5%	Input signal	U _{DC} , U _{AC} Effective value (sinusoidal only) 40-60 Hz
Input voltage	0...30 V DC, 0...60 V DC, 0...150 V DC, 0...300 V DC, 0...440 V DC, 0...660 V DC, 0...60 V AC, 0...144 V AC, 0...300 V AC, 0...440 V AC, configurable	Number of inputs	1

Output

Load impedance current	≤ 500 Ω	Number of outputs	1
Output current	0...20 mA, 4...20 mA	Output voltage, note	0...10 V
Type	active, connected control must be passive	load impedance voltage	≥ 10 kΩ

General data

Accuracy	0.5 % FSR	Configuration	With FDT/DTM software
Galvanic isolation	3-way isolator, between input / output / supply	Power consumption	≤ 100 mA @ 24 VDC, ≤ 120mA @ 24V AC
Rail	TS 35	Step response time	< 300 ms
Temperature coefficient	≤ 200 ppm/K	Type of connection	Screw connection
Voltage supply	24...240 VUC (±10%)		

ACT20P-VM-AO-S**Weidmüller Interface GmbH & Co. KG**

Klingenbergstraße 26

D-32758 Detmold

Germany

www.weidmueller.com

Technical data**Insulation coordination**

EMC standards	IEC 61000-6 /-2, IEC 61000-6-4, IEC 61326-1	Galvanic isolation	3-way isolator, between input / output / supply
Impulse withstand voltage	4 kV (1.2/50 µs) input - output, 4 kV (1.2/50 µs) input / supply, 2.5 kV (1.2/50 µs) output / supply	Insulation voltage	1.5 kV AC output / supply, 2 kV AC input / output, 2 kV AC input / supply
Pollution severity	2	Rated voltage	600 V input / output, 600 V input / supply, 300 V output / supply
Surge voltage category	III		

Connection data

Type of connection	Screw connection	Tightening torque, min.	0.4 Nm
Tightening torque, max.	0.6 Nm	Clamping range, rated connection	1.5 mm ²
Clamping range, min.	0.5 mm ²	Clamping range, max.	2.5 mm ²
Wire connection cross section AWG, min.	AWG 26	Wire connection cross section AWG, max.	AWG 12

Classifications

ETIM 6.0	EC002653	ETIM 7.0	EC002653
ETIM 8.0	EC002653	ECLASS 9.0	27-21-01-20
ECLASS 9.1	27-21-01-20	ECLASS 10.0	27-21-01-20
ECLASS 11.0	27-21-01-20	ECLASS 12.0	27-21-01-20

Important note

Product information	<p>The analogue voltage converter ACT20P-VM-AO-S measures DC or AC voltages. The analogue input signal is linearly converted into an analogue output signal (current or voltage) and galvanically isolated.</p> <p>Features</p> <ul style="list-style-type: none"> • Configuration and monitoring are performed via FDT/DTM-Software „WI-Manager“. • Signal and alarm triggering upon exceeding limit values or reverse polarity DC input voltage • Front LED indicates operation status • 3-way galvanic isolation between input, output and power supply.
---------------------	---

Approvals

Approvals



ROHS	Conform
UL File Number Search	UL Website
Certificate No. (cURus)	E469563

ACT20P-VM-AO-S

Weidmüller Interface GmbH & Co. KG
Klingenbergstraße 26
D-32758 Detmold
Germany

www.weidmueller.com

Technical data**Downloads**

Approval/Certificate/Document of Conformity	UL certificate Declaration of Conformity
Engineering Data	CAD data – STEP
Engineering Data	EPLAN
Software	Library and function block – WI-Manager, DTM-Library for online installation V.1.2.3 Release notes for Weidmueller FDT-DTM Software version 1.2.3.
User Documentation	Instruction sheet 20210120 Security Advisory - WI-Manager affected by MundM Software fdtCONTAINER vulnerability
Catalogues	Catalogues in PDF-format

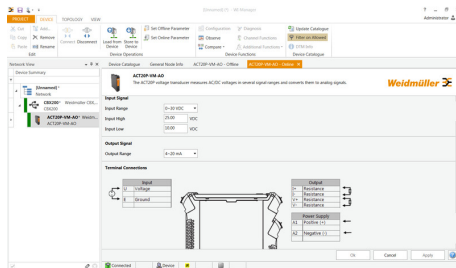
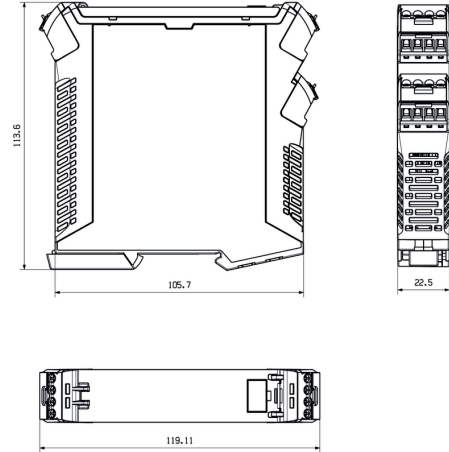
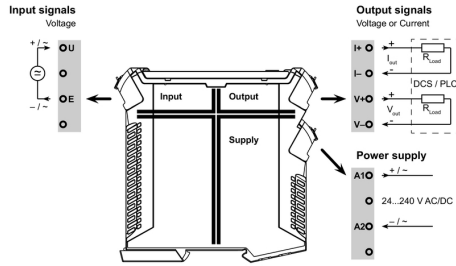
ACT20P-VM-AO-S

Weidmüller Interface GmbH & Co. KG
 Klingenbergstraße 26
 D-32758 Detmold
 Germany

www.weidmueller.com

Drawings

Dimensioned drawing



screenshot of configuration with FDT2 / DTM software