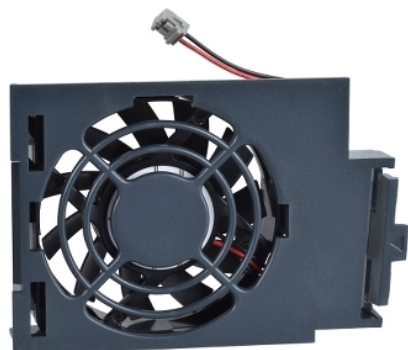


VZ3V32C100

Wear part, fan for variable speed drive, Altivar 32, Altivar Machine 320, from 5.5 to 7.5kW, three phase



Main

| | |
|------------------------------------|-------------------|
| Accessory / Separate Part Type | Fan kit |
| Product or Component Type | Fan |
| Accessory / separate part category | Cooling accessory |

Complementary

| | |
|---------------------------------------|--|
| Range Compatibility | Altivar 32 Altivar 320 |
| Accessory / separate part destination | Variable speed drive |
| Kit composition | Fan Mounting bracket Instruction sheet |
| Product compatibility | Variable speed drive ATV32 5.5 kW, 380...500 V three phase Variable speed drive ATV32 7.5 kW, 380...500 V three phase Variable speed drive ATV320...B 5.5 kW, 380...500 V three phase Variable speed drive ATV320...B 7.5 kW, 380...500 V three phase Variable speed drive ATV320...C 5.5 kW, 200...240 V three phase Variable speed drive ATV320...C 7.5 kW, 200...240 V three phase Variable speed drive ATV320...C 5.5 kW, 525...600 V three phase Variable speed drive ATV320...C 7.5 kW, 525...600 V three phase |

Ordering and shipping details

| | |
|-----------------------|--------------------------|
| Category | 22149-ATV320 ACCESSORIES |
| Discount Schedule | CP4B |
| GTIN | 3606480517983 |
| Nbr. of units in pkg. | 1 |
| Package weight(Lbs) | 9.88 oz (280.0 g) |
| Returnability | Yes |
| Country of origin | ID |

Packing Units

| | |
|------------------------------|-------------------------|
| Unit Type of Package 1 | PCE |
| Package 1 Height | 2.76 in (7.0 cm) |
| Package 1 width | 9.06 in (23.0 cm) |
| Package 1 Length | 6.69 in (17.0 cm) |
| Unit Type of Package 2 | P06 |
| Number of Units in Package 2 | 56 |
| Package 2 Weight | 63.23 lb(US) (28.68 kg) |
| Package 2 Height | 28.94 in (73.5 cm) |
| Package 2 width | 23.62 in (60.0 cm) |
| Package 2 Length | 31.50 in (80.0 cm) |

Fan Replacement

| | |
|---|--|
| 1 | Push the locking tab. |
| 2 | Disconnect the plug-in connector and remove the fan. |

